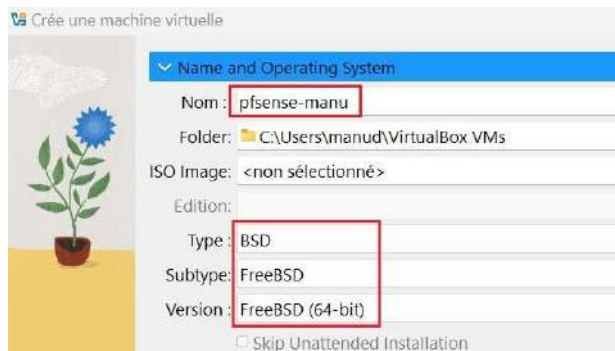


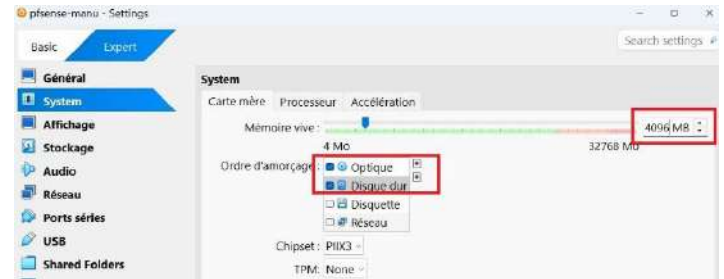
Installer PFGSENSE sur une VM

<https://www.pc2s.fr/pfsense-installation-et-configuration/>

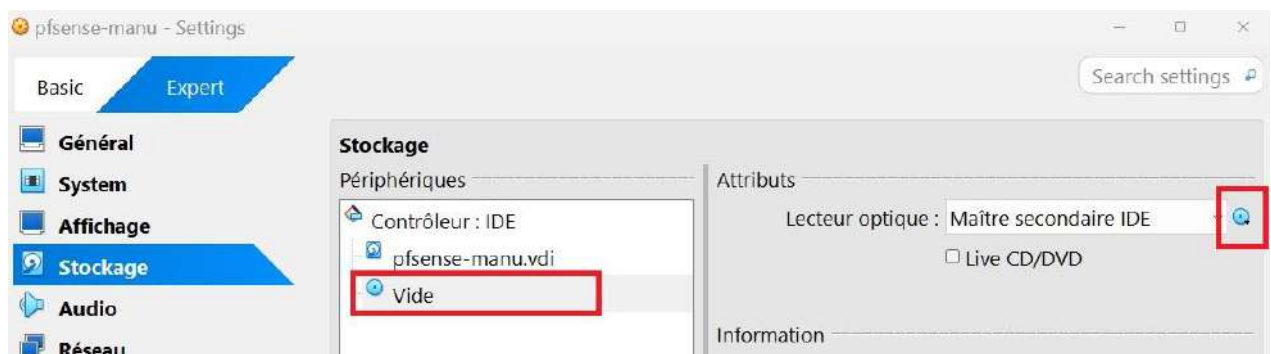
1



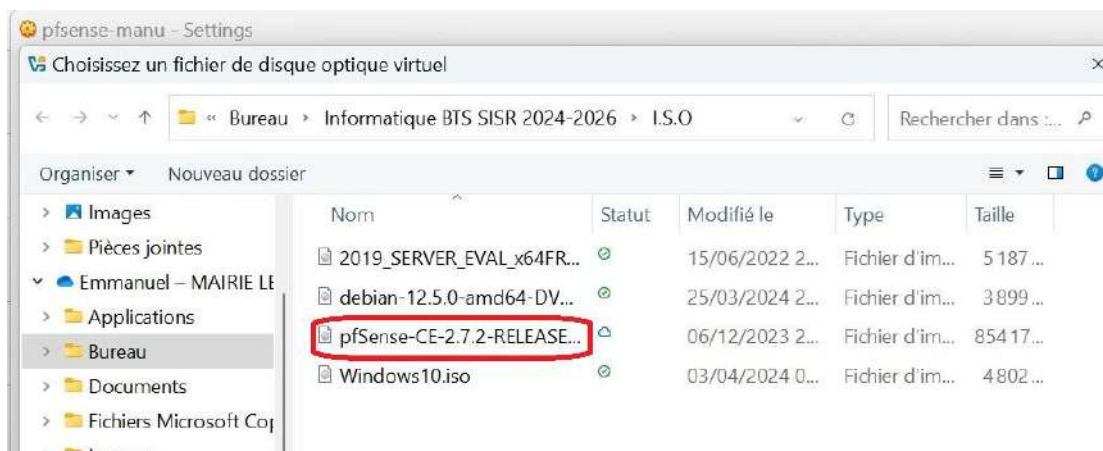
2



3



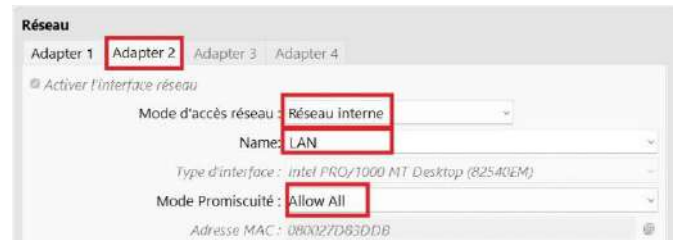
4



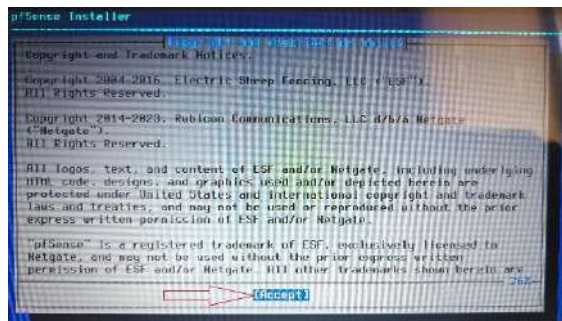
5



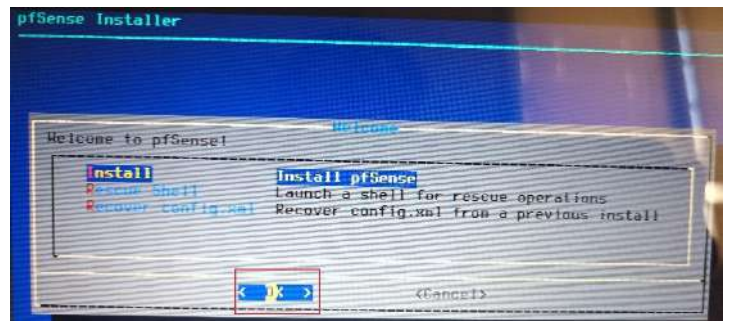
6



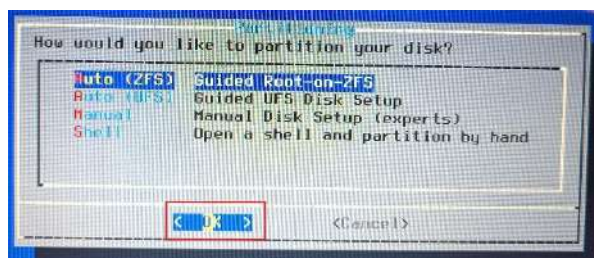
7 Accepter la licence



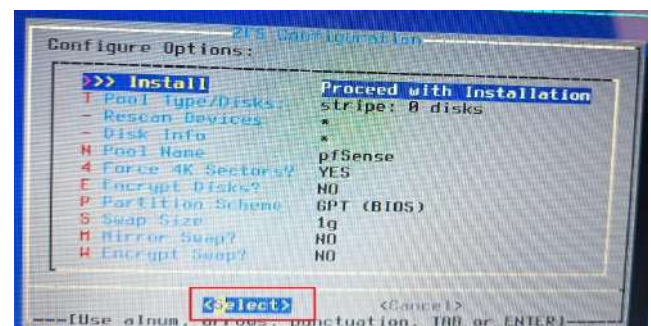
8 Install pfSense : OK



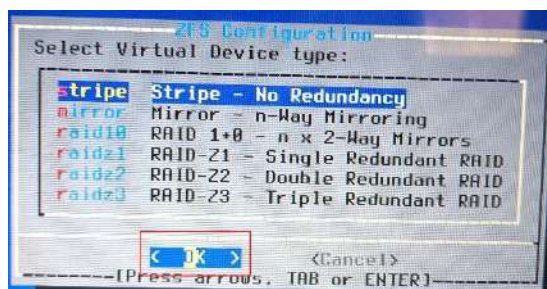
9 Auto (ZFS) pour pfSense ou Auto (UFS) BIOS



10

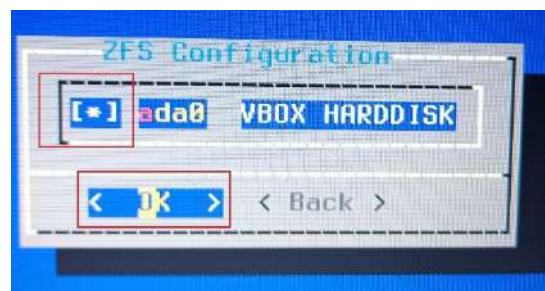


11 Sélectionner « **Install** » puis « **Stripe** »

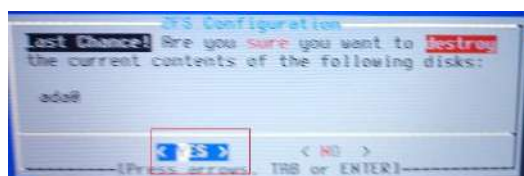


12 Sélectionner avec la touche

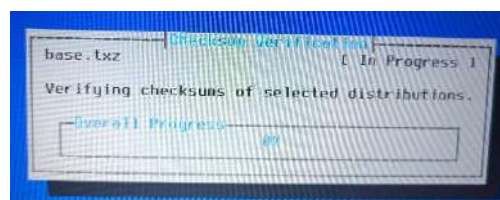
« Espace » le **disque** et sélectionner « YES »



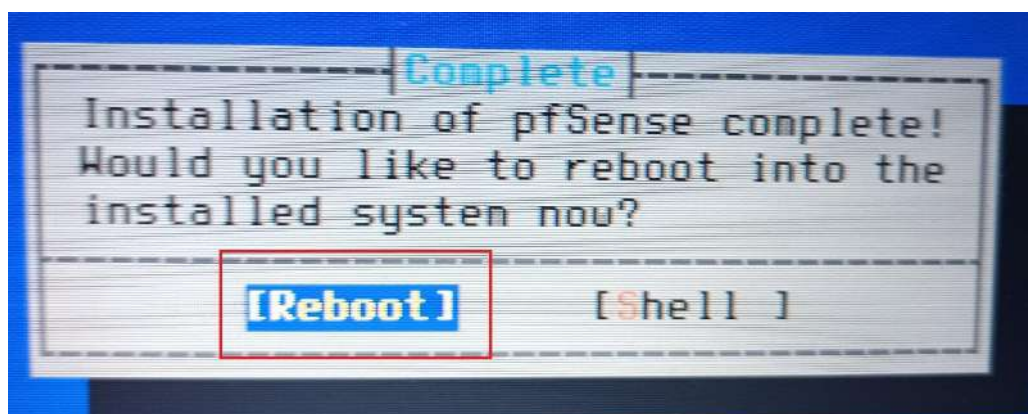
13



14



15 Sélectionner : **Reboot** (Ne pas oublier d'éjecter le CD)



16 Saisissez “n” pour “no” pour la création de VLAN

```
AMD Features2=0x21<LAHF,ABM>
Structured Extended Features=0x2bb9<FSGSBASE,BMI1,HLE,AUX2,SMEP,BMI2,ERMS,RTM,
MFPUSG>
XSAVE Features=0x1<XSAVEOPT>
Hypervisor: Origin = "Microsoft Hv"
Done.
..... done.
Initializing..... done.
Starting device manager (devd)...done.
Loading configuration.....done.
Updating configuration.....done.
Warning: Configuration references interfaces that do not exist: em0 em1

Network interface mismatch -- Running interface assignment option.

Valid interfaces are:

hn0      00:15:5d:64:04:3f (down) Hyper-V Network Interface
hn1      00:15:5d:64:04:40 (down) Hyper-V Network Interface

Do VLANs need to be set up first?
If VLANs will not be used, or only for optional interfaces, it is typical to
say no here and use the webConfigurator to configure VLANs later, if required.

Should VLANs be set up now [y|n]? n
```

17 Sélectionner a pour le WAN ou (DHCP) mètre le nom si vous le connaissez

```
Initializing..... done.
Starting device manager (devd)...done.
Loading configuration.....done.
Updating configuration.....done.
Warning: Configuration references interfaces that do not exist: em0 em1

Network interface mismatch -- Running interface assignment option.

Valid interfaces are:

hn0      00:15:5d:64:04:3f (down) Hyper-V Network Interface
hn1      00:15:5d:64:04:40 (down) Hyper-V Network Interface

Do VLANs need to be set up first?
If VLANs will not be used, or only for optional interfaces, it is typical to
say no here and use the webConfigurator to configure VLANs later, if required.

Should VLANs be set up now [y|n]? n

If the names of the interfaces are not known, auto-detection can
be used instead. To use auto-detection, please disconnect all
interfaces before pressing 'a' to begin the process.

Enter the WAN interface name or 'a' for auto-detection
(hn0 hn1 or a): hn0
```

18 pour le LAN en IP fixe.

```
Enter the LAN interface name or 'a' for auto-detection
NOTE: this enables full Firewalling/NAT mode.
(hn1 a or nothing if finished): hn1
```

19

```
Enter the LAN interface name or 'a' for auto-detect.
NOTE: this enables full Firewalling/NAT mode.
( a or nothing if finished):

The interfaces will be assigned as follows:
WAN -> em0
Do you want to proceed [y/n]? y
```

20 Configuration de l'adresse IP de la carte réseau local LAN hn1

```
WAN (wan)      -> hn0      -> v4/DHCP4: 192.168.100.150/24
LAN (lan)      -> hn1      -> v4: 192.168.1.1/24

0) Logout (SSH only)          9) pfTop
1) Assign Interfaces          10) Filter Logs
2) Set interface(s) IP address 11) Restart webConfigurator
3) Reset webConfigurator password 12) PHP shell + pfSense tools
4) Reset to factory defaults    13) Update from console
5) Reboot system              14) Enable Secure Shell (sshd)
6) Halt system                15) Restore recent configuration
7) Ping host                  16) Restart PHP-FPM
8) Shell
```

21

Sélectionner : 2 (Set interface IP address)

```
0) Logout (SSH only)          9) pfTop
1) Assign Interfaces          10) Filter Logs
2) Set interface(s) IP address 11) Restart webConfigurator
3) Reset webConfigurator password 12) PHP shell + pfSense tools
4) Reset to factory defaults    13) Update from console
5) Reboot system              14) Enable Secure Shell (sshd)
6) Halt system                15) Restore recent configuration
7) Ping host                  16) Restart PHP-FPM
8) Shell

Enter an option: 2
```

22 Sélectionner la carte réseau local LAN : 2

23

Saisissez l'adresse IP souhaitée : 192.168.2.1 (pour notre exemple)

```
Enter the new LAN IPv4 address. Press <ENTER> for none:  
> 192.168.2.1
```

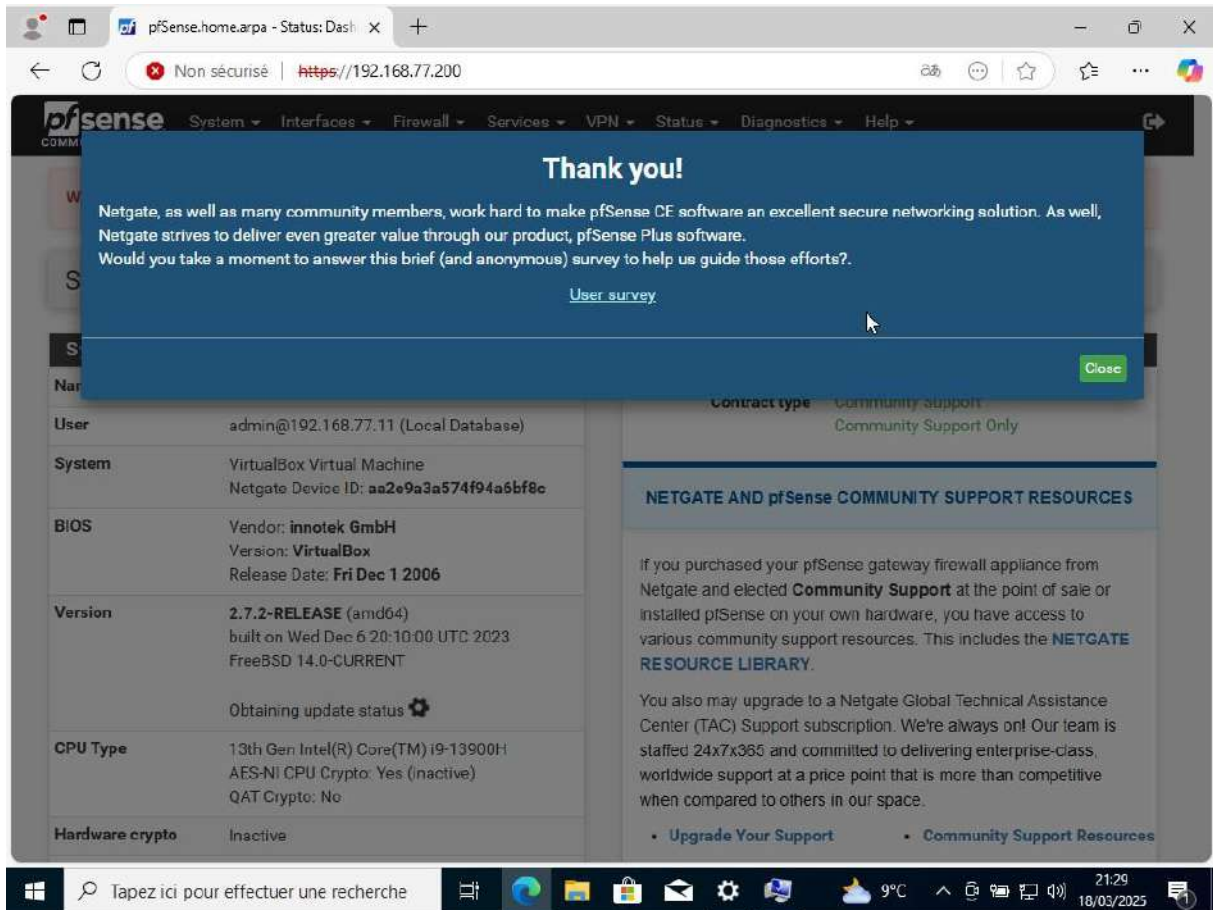
24

```
8) Shell  
Enter an option: 2  
Configure IPv4 address WAN interface via DHCP? (y/n) y
```

25

```
Enter an option: 2  
Configure IPv4 address WAN interface via DHCP? (y/n) y  
Configure IPv6 address WAN interface via DHCP6? (y/n) n
```

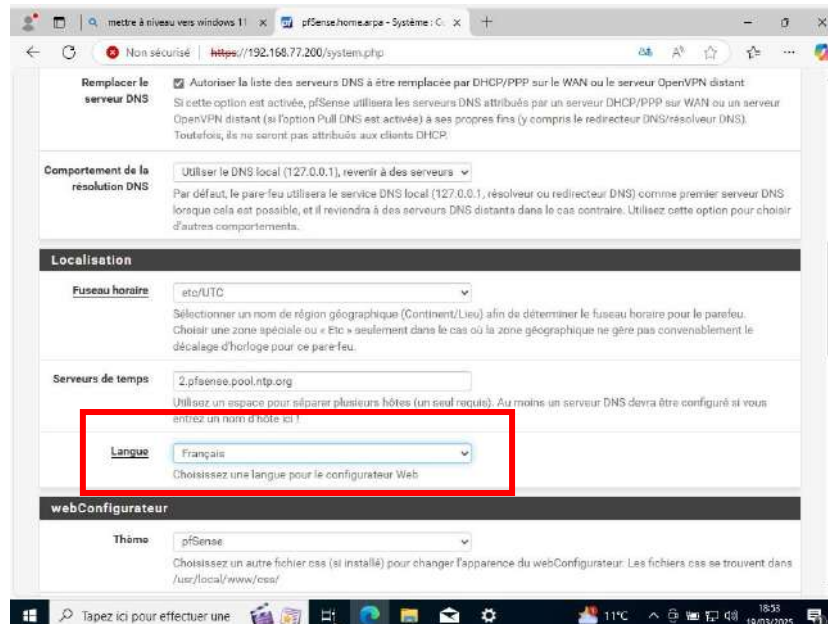
Ouvrir un navigateur Web sur une machine virtuelle sur le même plan d'adressage que les paramètres du PfSense ex : 192.168.77.200 ID : admin MDPS : pfsense



PFSENSE en français

aller dans système, Configuration générale descendre jusqu' à Localisation

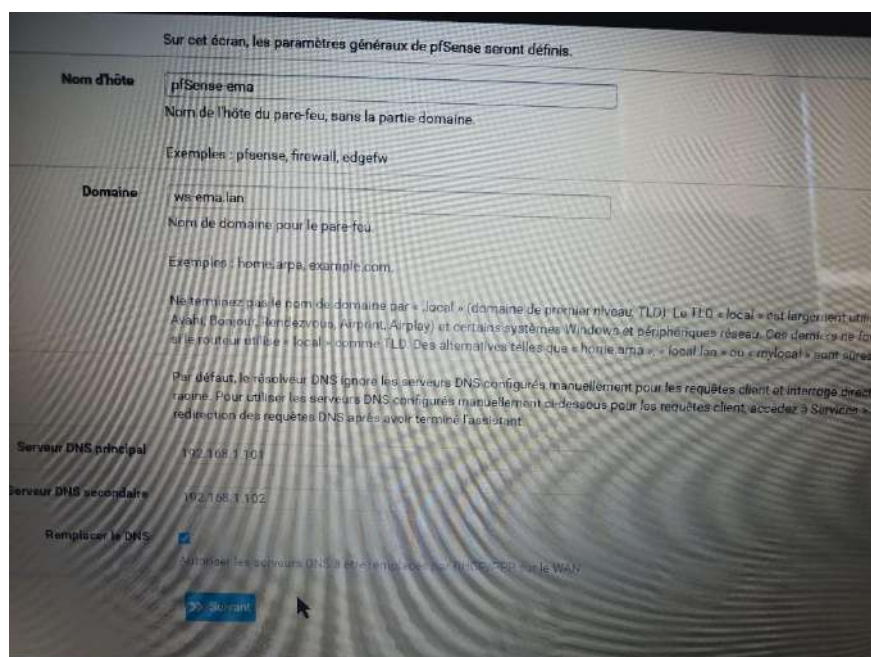
(n'oublier pas de sauvegarder en bas de page et de (confirmer en haut de page si demander)



Réglage du DNS

Dans le ruban de PFSENSE Aller dans system ; General Setup ; dans système personnaliser le nom d'hôte ex : Pfsense-ema, puis le Domaine :ws-ema.lan en suite les paramètres du serveur DNS

192.168.1.101 ; 192.168.1.102 et cocher remplacer le DNS



Ajouter le widgets sur +

pfSense COMMUNITY EDITION

Système - Interfaces - Pare-feu - Services - VPN - État - Diagnostics - Aide -

État / Tableau de bord

Informations système

Nom	pfSense-ema.home.arpa
Utilisateur	admin@192.168.77.11 (Local Database)
Système	VirtualBox Virtual Machine ID de l'appareil Netgate: aa2e9a3a574f94a5b18c
BIOS	Fournisseur: innotek GmbH Version: VirtualBox Date de sortie: Fri Dec 1 2006
Version	2.7.2-RELEASE (amd64) Basé sur Wed Dec 6 20:10:00 UTC 2023 FreeBSD 14.0-CURRENT Le système est à jour. Informations sur la version mises à jour à Wed Mar 19 18:06:52 UTC 2025
Type de CPU	13th Gen Intel(R) Core(TM) i9-13900H AES-NI CPU Crypto: Yes (inactive) QAT Crypto: No

Interfaces

WAN	↑ 1000baseT <full-duplex>	192.168.1.32 2a01:cb1d:5a0:1f00:a00:27ff:fead:44e2
LAN	↑ 1000baseT <full-duplex>	192.168.77.200

Selectines, journal du parefeu cela vas permettre d'avoir un visuel sur des intrusions potentiels

pfSense COMMUNITY EDITION

Système - Interfaces - Pare-feu - Services - VPN - État - Diagnostics - Aide -

État / Tableau de bord

Informations système

Nom	pfSense-ema.home.arpa
Utilisateur	admin@192.168.77.11 (Local Database)
Système	VirtualBox Virtual Machine ID de l'appareil Netgate: aa2e9a3a574f94a5b18c
BIOS	Fournisseur: innotek GmbH Version: VirtualBox Date de sortie: Fri Dec 1 2006
Version	2.7.2-RELEASE (amd64) Basé sur Wed Dec 6 20:10:00 UTC 2023 FreeBSD 14.0-CURRENT Le système est à jour. Informations sur la version mises à jour à Wed Mar 19 18:06:52 UTC 2025
Type de CPU	13th Gen Intel(R) Core(TM) i9-13900H AES-NI CPU Crypto: Yes (inactive) QAT Crypto: No

Interfaces

WAN	↑ 1000baseT <full-duplex>	192.168.1.32 2a01:cb1d:5a0:1f00:a00:27ff:fead:44e2
LAN	↑ 1000baseT <full-duplex>	192.168.77.200

Journaux du Pare-feu

Action	Heure	SI	Source	Destination
×	Mar 19 19:51	WAN	192.168.1.12	255.255.255.255:6667
×	Mar 19 19:51	WAN	192.168.1.12	255.255.255.255:6667
×	Mar 19 19:51	WAN	192.168.1.12	255.255.255.255:6667
×	Mar 19 19:51	WAN	192.168.1.12	255.255.255.255:6667
×	Mar 19 19:51	WAN	192.168.1.12	255.255.255.255:6667

